



Growing markets need reliable  
and flexible partners  
***Tribology from Main-Metall***

Main-Metall International AG  
Business Cube  
Birkenstr. 47  
CH-6343 Rotkreuz

Fon: +41 41 740-6400  
Fax: +41 41 740-6402

[www.main-metall.com](http://www.main-metall.com)

Main-Metall Tribologie GmbH  
Industriestr. 1  
D-66885 Altenglan

Fon: + 49 6381 913-0  
Fax: + 49 6381 913-110

Main-Metall Española, S.L.  
Apartado 73  
E-39300 Torrelavega

Fon: + 34 942 8259-00  
Fax: + 34 942 8259-06

Main-Metall do Brasil  
Indústria e Comércio Ltda.  
Rua Dois, 368  
Distrito Industrial João Narezzi  
BR-13347-404 Indaiatuba (SP)  
Fon: +55 19 3936-6565  
Fax: +55 19 3936-6566



We look at things  
*your way*

Dynamic and expanding markets are your challenge and you need a reliable partner. Main-Metall is the partner by your side. We think and act like you and we know your markets well. We will assist you to find the best solutions for your challenges.



Main-Metall  
*Innovative markets are our home ground*

On the move for more than 80 years - that is the secret of our success. Established as a foundry in 1926 Main-Metall has become a developer, producer and supplier of a wide range of high-quality plain bearings and guiding elements for the mechanical engineering and plant manufacturing industries.

Tribology, the science of friction, lubrication and wear, is our profession and calling. Internally developed products and manufacturing processes based on research and technical know-how in addition to DIN EN ISO 9001:2000 certification, have made Main-Metall an eagerly sought after business partner in the global market. Our diversified product range for the manufacture of plain bearings, bearing materials and non-ferrous castings is unrivalled. Expert advice, customised business solutions and unique design, complement our comprehensive service package.



## Know how & Partnership

***We develop solutions to your business challenges***

### 1. Consulting

Main-Metall is your global partner for bearings solutions. For new projects, get us involved as early in the game as possible.

### 2. Definition

Based on your specifications and technical application we determine the right bearings for you.

### 3. Calculation and Dimensioning

We perform calculations to determine load capacity, friction losses, lubrication requirements and service life. In short, we tell you all bearing parameters required for long term safe operation.

### 4. Design

With state of the art engineering and consideration of all parameters we are in a position to provide you with fully integrated design proposals.

### 5. Prototyping

We build prototype bearings for testing in your application or verification on our test benches.

### 6. Test benches

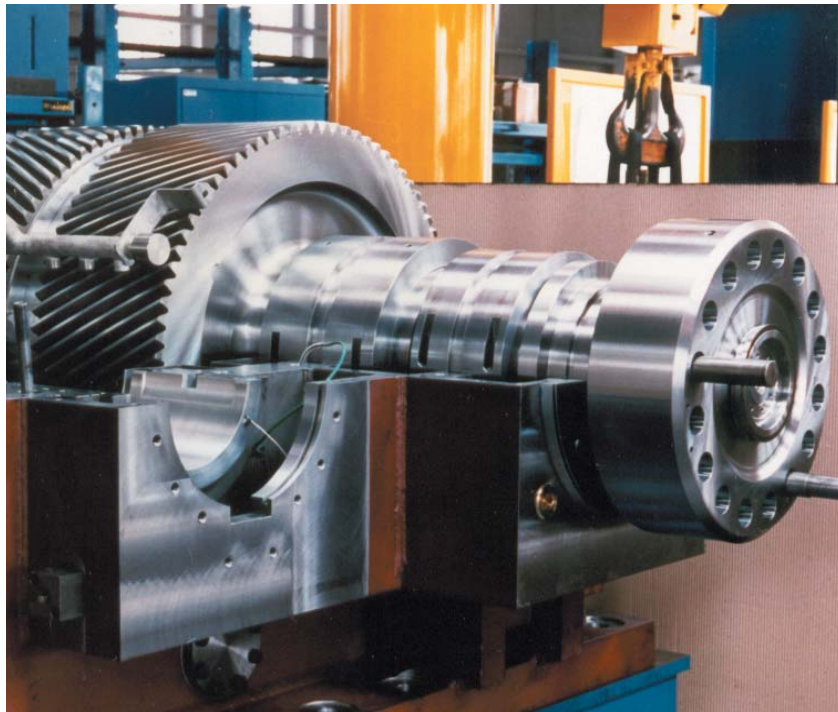
We test materials and the performance of our products under practical conditions in our technical application laboratory.

### 7. Manufacturing

All our manufacturing plants have their individual strengths and are vertically integrated. The result is steady product quality and outstanding flexibility. Furthermore, our highly qualified employees do their utmost to fulfil your expectations.

### 8. Support and Service

Our after sales service and support is available for any advice you might need during the ongoing use of our products.



History  
For more than 80 Years

1926 Saarbrücker Metallgusswerke was founded by Fritz Schorr and Albert Kretzler.

1944 Saarbrücker Metallgusswerke moves to Kitzingen-on-Main.

1946 Fritz Schorr ventures a fresh start and establishes Main-Metall-Gießerei Fritz Schorr. He markets a new bearing material under the registered trademark »Main-Metall«.

1978 Further extension of the product range with self-lubricating bearings and guiding elements for low-maintenance and maintenance-free applications under the product name »MFA«.

1993 Take-over of Main-Metall Española, S.L. in Torrelavega which had been a licensee of Main-Metall since 1957.

1997 Activity in the South-American market through the foundation of Main-Metall do Brazil in Sao Paulo, Brazil.

2000 »Technologiegruppe Main-Metall (TMM)« is established with selected members of practical and scientific background.

2002 Development and market introduction of norixlager®.

2003 Development and market introduction of balixlager®.

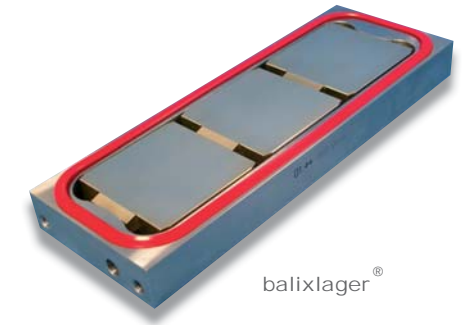
2004 Main-Metall International AG is established in Switzerland to focus on international markets.

2005 Development projects in future markets like power generation, wind energy and mining.

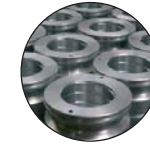
2006 Substantial investments in our manufacturing plants to increase output and introduce innovative processes.

2007 Group restructuring and establishment of Main-Metall Tribologie GmbH in Germany.

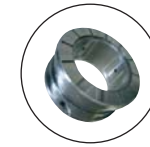
Product Groups  
Diversity and Precision



balixlager®



The Company's Own Brand Main-Metall® is our proprietary zinc-aluminium-copper alloy for bearings and guiding elements.



**High-Tech Bearings**  
This group of hydrodynamic plain bearings consists of cylindrical, multilobe, tilting pad and journal/ thrust plain bearings.



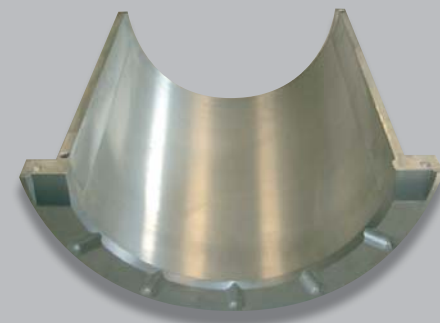
**Self-lubricating Bearings**  
We manufacture copper-based bearings and guide elements with solid lubricant deposits called »MFA«.



**The Indestructibles**  
Our plain bearings made of cast copper-based alloys are characterized by their optimum anti-friction properties and resistance to wear.



1926



Main-Metall® bearing shell



norixlager®

Main-Metall  
Quality Management

» With our quality management system according to DIN EN ISO 9001:2000 we make sure that quality gets our full attention. Our quality management system not only covers our products and services but also our internal procedures. We set high standards and we aim for continuous improvement. Our quality policy is driven by customer satisfaction«.

